

THE GEOSOURCE UPDATE

Geosynthetics | Erosion & Sediment Control | Stormwater Management | Hardscapes

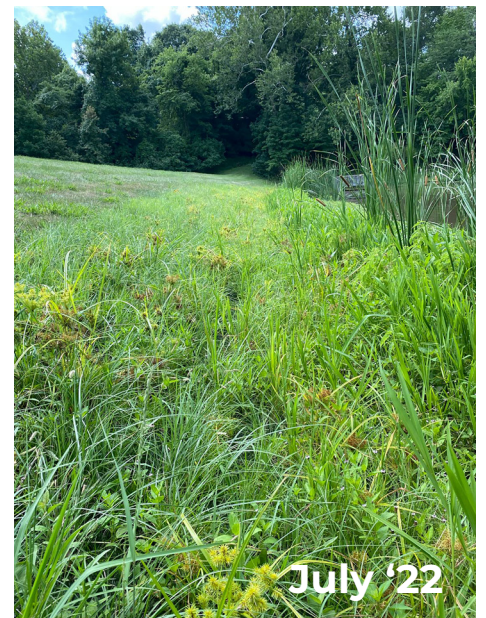
PROJECT HIGHLIGHT

InstaTurf Used for Erosion Control & Shoreline Stabilization

ASP Enterprises supplied InstaTurf's ShearForce10 as a solution for a pond bank erosion problem. ShearForce10 is a hybrid-turf mat made of simulated turf that allows natural grass and vegetation to grow up through the mat. InstaTurf is a permanent solution that provides a very high level of immediate erosion protection.

Because of its immediate erosion protection, there is less risk of soil and seed washing out prior to vegetation establishment. InstaTurf stays in place to reinforce and provide long-term erosion control and stabilization. As the vegetation grows and is fully established, InstaTurf becomes even stronger and is highly UV stable and weather-resistant.

The contractor used a native grass/plant mix, which typically takes longer to establish than turf-type grasses. However, after just a few months, the vegetation was doing quite well! The engineer on the project initially considered rock riprap but opted for ShearForce10 with native plants instead. The ShearForce10 is a solution that will blend into nature and provide a much more user-friendly and accessible vegetated pond bank for the local residents. Plus, it can be maintained by mowing.



PRODUCT PROFILE



Mirafi RSi Fabrics

Mirafi®'s RSi line of geosynthetics is the premier solution for base course reinforcement and subgrade stabilization of Transportation, Building Site Development and Energy Infrastructure projects such as roadways, railways, and airports.

Available in three weights - RS280i, RS380i and RS580i - these geosynthetics provide reinforcement, filtration, separation and confinement.

The RSi fabrics offer considerable material savings and improved sustainability for soft subgrade conditions. With the RSi fabrics, less aggregate is needed to stabilize the subgrade, reducing material costs. The RSi fabrics also offer improved sustainability as they extend the lifetime of the roads/projects.

The filtration function of RSi fabrics allows for adequate movement of liquid across the plane of the geotextile, limiting soil loss over the service lifetime of the application. The confinement function restrains lateral movement of a soil or aggregate. The separation function allows the flexible, porous geotextile to be placed between dissimilar materials so that the integrity and intended functions of both materials are improved and remain intact.



CLEAN & GREEN SUSTAINABILITY CONFERENCE & EXPO

Our famous Clean & Green Sustainability Conference & Expo is back in 2023! Join ASP Enterprises, Quick Supply Co., Bowman Construction Supply & Cascade Geosynthetics for a one-day event in a city near you.

Receive 7 Professional Development Hours for attending! Attendees will also hear presentations from our top vendors and can walk around our vendor exhibit hall to chat one-on-one with vendors to learn more about the products we supply.

SIX DATES & LOCATIONS

Registration is open! Click the event links below to register and reserve your spot at C&G.



Omaha March 7th at Tiburon Golf Club	Des Moines March 8th at Toast	Kansas City March 9th at Fiorella's Event Center	St. Louis March 10th at AC Hotel by Marriott St. Louis Chesterfield	Portland March 14th at Holiday Inn Portland, Columbia Riverfront	Denver March 16th at Denver PPA Event Center
---	--	---	--	---	---

TECHNICAL TALKS WEBINAR SERIES

Join us for our monthly webinars as we answer questions, share technical information and collaborate on projects. Plus, attendees receive a PDH Certificate for attending. Our goal is to educate attendees on some of the site solutions we can provide.



UPCOMING WEBINARS

Geosynthetic Solutions

December 7th, 2022 | 12:30pm-1:30pm

[REGISTER HERE](#)



With all the options of geosynthetic solutions including geotextiles, geogrids, geomembranes, geosynthetics clay liners, geocells, etc. available on the market, there are endless uses for geosynthetics. By integrating geosynthetics into your project designs, you will minimize your risks and maximize the value and results. In this webinar, learn about the best geosynthetic products to use for stabilization, separation, filtration, reinforcement, drainage, etc. Bill Murphy, P.E. and Melissa Hurley will discuss the wide range of geosynthetic solutions we supply and the appropriate applications for each, giving you a comprehensive understanding of geosynthetic solutions.

MSE Walls & Structures

January 4th, 2023 | 12:30pm-1:30pm

[REGISTER HERE](#)



In this webinar, explore Mechanically-Stabilized Earth (MSE) Walls and their many styles and applications. We will review various components that are used for reinforcement and facing. Landscape features, retaining walls, bridge abutments, slopes, streambanks, shorelines are among the many different places where MSE Walls are used. Travis Riehl will walk us through real-world projects while sharing lessons learned about design considerations and construction processes. We will highlight the advantages of MSE Walls compared to other options.

EMPLOYEE SPOTLIGHT



Brian Mosley, CESCL

Technical Sales Representative at Cascade Geosynthetics

Brian joined Cascade Geosynthetics in November 2022. Brian is an Army brat and Coast Guard veteran, so he grew up all over the U.S., including Hawaii and Alaska. His Coast Guard duty focused on oil spill response, investigation and remediation, leading a strike team in Western Alaska. He has worked in sales and operations for major brands like Snap-on Tools, Outward Bound Professional and Starbucks Business Alliances. His first job involving geotextiles was with XeroFlor America, a living roof system company acquired by Low & Bonar. He's a soil science nerd with a keen interest in restoration projects. He has thru-hiked the Appalachian and Pacific Crest trails and spends his off time teaching organic gardening and restoring an old fixer-upper property where he hosts live music events. He looks forward to helping grow Cascade's business in Alaska and learning a ton from his new colleagues in the Hale family of companies.

brian.mosley@cascadegeos.com | phone: 907.214.0138

ENGINEER'S NOTE



Bill Murphy, P.E.
bmurphy@aspent.com

From the Desk of Bill Murphy, P.E.

Happy Thanksgiving!

Greetings from Denver, the home of the 2022 IECA Mountain States Conference. Like I said last month, it was great to see many familiar faces and to meet new friends in our industry. This week we were blessed to have the IECA staff join us since they are based here in Denver. This event was well attended (over 140), and the audience participation during my presentation was encouraging. We had a full room. Among the many takeaways from the sessions taught this week, I was reminded how important it is that we make time to stay involved with our peers and continue sharing knowledge. Everyone has a story to tell. I want to hear yours. Share with me your challenges and your successes.

What are your goals for 2023? Reach out to me or your local rep, and we will meet for breakfast, lunch or dinner. Speaking of together, we hope you will register every month for our "Technical Talks" webinar series even if you are not sure you will be able to join us live. We record each webinar and send the link for our YouTube video for each webinar to every attendee each month. We offer a continuing education PDH certificate to all attendees. Speaking of continuing education, we offer PDH certificates to all Clean & Green attendees, too. Please register for Clean & Green to make sure we save a seat for you. Find the registration link in this newsletter and in our company's emails from the past couple of weeks.

This morning I saw "The Thankful Tree" in my hotel lobby (see pics). What a great idea! Thank you for being part of our work circle and sharing this journey with us. We appreciate you. We are all better together. Personally, I love hearing from you, so please keep the questions and comments coming. Happy Thanksgiving!



CONTACT US

ASP Enterprises

aspent.com

salesasp@aspent.com

Quick Supply Co.

quicksupplyco.com

salesquick@quicksupplyco.com

Bowman Construction Supply

bowmanconstructionsupply.com

salesbcs@bowmanconstructionsupply.com

Cascade Geosynthetics

cascadegeos.com

salescascade@cascadegeos.com

St. Louis, MO

636.343.4357

Kansas City, MO

816.554.1191

Omaha, NE

402.861.8579

Wichita, KS

316.393.1554

Des Moines, IA

515.289.1271

Denver, CO

303.696.8960

Loveland, CO

970.535.0863

Colorado Springs, CO

719.257.7840

Portland, OR

971.339.1020