



## PRETREATMENT FOR BIORETENTION

Rain Gardens • Swales • Filtration Basins • Infiltration Basins



### Maximize Capacity & Extend Effective Life

- Grate/filter/chamber combination captures sediment and debris
- Overflow points prevent inlet debris from causing bypass before bioretention reaches capacity

*"A Rain Guardian is a must for any rain garden."*  
- Steve M.,  
St. Paul, MN



### Simplify Maintenance

- Sediment and debris removed from chamber with shovel
- Drop-in filter cleaned with broom or hose

*"The Rain Guardians provide very effective pretreatment along with efficient, simplified maintenance."*  
- Noah Czech,  
City of St. Cloud, MN



### Easy Installation

- Placement and securing take only minutes
- New construction or retrofits

*"It's amazing, with just a 0.5" rain event each Rain Guardian captured two 5 gallon buckets full of sediment. Maintenance is simple and can be accomplished in only minutes..."*  
- Brian Sanoski,  
Wright SWCD

## Rain Guardian—Turret

Standard exterior dimensions:

44" x 49" base, 19.5" total height

Options:

Light Duty rated (541 lb. concentrated load)

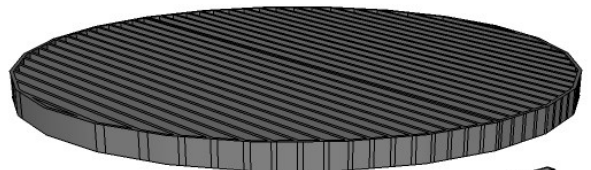
Heavy Duty rated (2,456 lb. concentrated load)

Pricing:

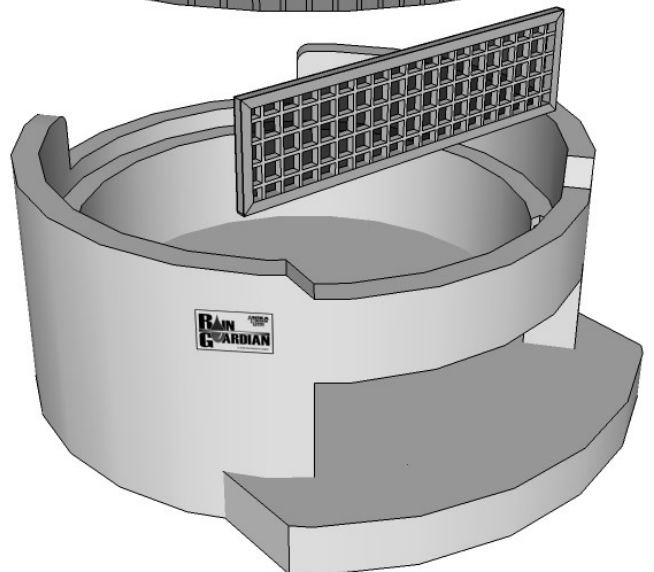
Contact A.S.P. Enterprises, Inc.

Territory: AR, IA, IL, KS, MO, NE, OK

Galvanized steel grate (2-piece)



Anodized aluminum filter frame and fiberglass filter grid



Steel reinforced monolithic concrete riser and base (1,030 lbs.)

Distributed by:

**Quick Supply Co.**

www.quicksupplydm.com  
(515)289-1271

Distributed by: Quick Supply Co., 6620 NW Toni Drive Des Moines, IA 50313, Phone: (515)289-1271, www.quicksupplydm.com

Developed by:

