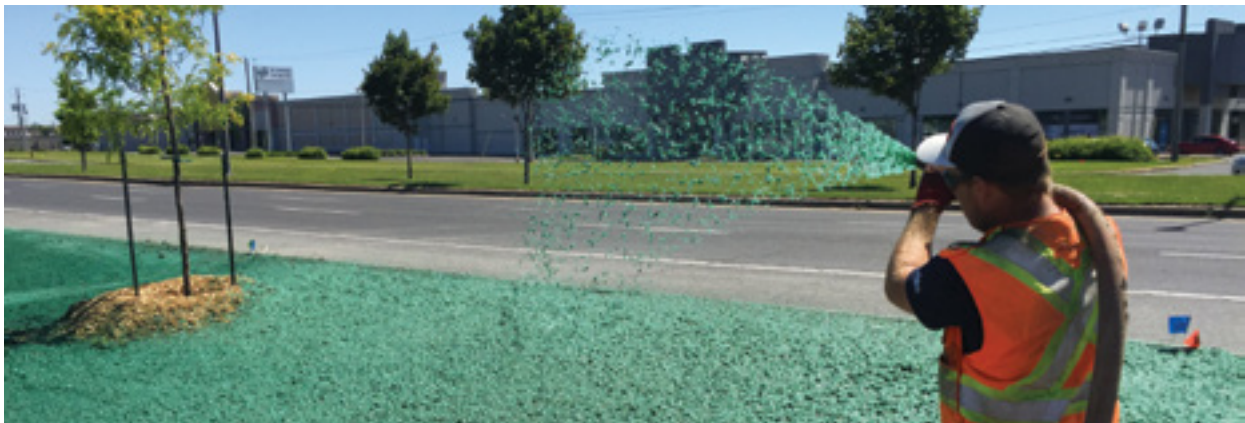


The Cleanest, Most Consistent, Cellulose Mulch Available

Profile[®] Products, the makers of Flexterra[®] HP-FGM[™], is the world's largest manufacturer of hydraulic mulches and unsurpassed in developing new erosion control and vegetation establishment technologies. You can be assured that any Profile hydraulic mulch you use or specify represents "best in class." Our cellulose mulch and cellulose fiber mulch with tackifier are no exception.



Three Pillars of Performance

Every bag and pallet of mulch is individually weighed to ensure consistent low-moisture content for reliable coverage you can't get from competitive products.



START WITH ONLY 100% GRADE-A, RECYCLED PAPER

Starting with the highest quality raw ingredients, in-line inspectors utilize metal detectors and magnets to remove any contaminants, ensuring you get the most consistently clean product possible.



FINE-TUNED GRINDING AND SCREENING

After being cleaned of contaminants, the paper is screened and ground—utilizing a process that we have perfected over the past 25 years—to maximize mulch coverage and performance.



CONDUCT REGULAR QUALITY ANALYSIS

To ensure every bag of Profile Cellulose Mulch and Cellulose Mulch with Tackifier meets our stringent standards, the cellulose is metered throughout the entire process.

You Get More from Superior Cellulose Mulch and Cellulose Mulch with Tackifier

- Exclusive defibration and production processes improve water-holding capacity
- Lower percentage of fines which greatly reduces maché effect
- Easy to use and load in equipment—goes into suspension at an accelerated rate, allowing for uniform ground coverage
- Ideal cover for general seeding and tacking straw
- Meets or exceeds all requirements for cellulose fiber mulch products
- Non-toxic and environmentally safe
- Cellulose Mulch with Tackifier comes pre-blended with tackifier to minimize potential seed washout and erosion
- Functional longevity is \leq 3 months

Profile® Cellulose Mulch and Cellulose Mulch with Tackifier Technical Data

COMPOSITION

Cellulose Mulch:

100% Recycled Cellulose Fibers

Cellulose Mulch with Tackifier:

97% Recycled Cellulose Fibers

3% Tackifier including High-Viscosity Colloidal Polysaccharides

PACKAGING

Bags: Net Weight – 50 lb (22.7 kg)
UV- and weather-resistant plastic film

Pallets: 40 bags/pallet, 1 ton (907 kg)/pallet;
Weather-proof, stretch-wrapped with UV-resistant pallet cover

SLOPE GRADIENT/CONDITION	APPLICATION RATE
\leq 4H:1V	1,500 – 2,000* lb/ac (1,680 – 2,240* kg/ha)
Maximum slope length (both products):	15 ft (4.6 m)
Hay and Straw Mulch Binding:	750 lb/ac (840 kg/ha)
*For maximum performance, 2,000 lb/ac (2,240 kg/ha) is recommended.	

- Application rates may vary depending on site-specific conditions. Visit profilePS3.com to determine the right rate for your project.
- You can also customize specifications or select products based on performance at erosioncontrolspecs.com.



Made in Limestone, Tennessee, USA

Other Hydraulic Mulch Products from Profile:

- Wood with Tackifier
- Wood
- Wood/Cellulose Blend with Tackifier
- Wood/Cellulose Blend

Profile has recycled over 3.5 billion pounds (15.9 billion kg) of wood and paper fibers through the production of Profile High Performance Mulches.



Solutions for your Environment™

PROFILE Products LLC

750 W. Lake Cook Road • Suite 440
Buffalo Grove, IL 60089

Profile and Flexterra are registered trademarks of PROFILE Products LLC. Solutions for your Environment and HP-FGM are trademarks of PROFILE Products LLC.



LOCATIONS & CONTACT INFO

ASP ENTERPRISES

aspent.com
salesasp@aspent.com

St. Louis, MO 636.343.4357
Omaha, NE 402.861.8579
Kansas City, MO 816.554.1191
Wichita, KS 316.393.1554

BOWMAN CONSTRUCTION SUPPLY

bowmanconstructionsupply.com
salesbcs@bowmanconstructionsupply.com

Denver, CO 303.696.8960
Loveland, CO 970.535.0863
Colorado Springs, CO 719.257.7840

QUICK SUPPLY CO.

quicksupplyco.com
salesquick@quicksupplyco.com

Des Moines, IA
515.289.1271

CASCADE GEOSYNTHETICS

cascadegeos.com
salescascade@cascadegeos.com

Portland, OR
971.339.1020

Salt Lake City, UT
435.276.0820

SOLUTIONS WE SUPPLY

GEOSYNTHETICS

Filter Fabrics
Stabilization Fabrics
Geogrids

- Road Grids
- Wall Grids
- Slope Stabilization

Specialty Fabrics

Composite Geomembranes

- GCLs, PVC, HDPE, LLDPE, EPDM, Granular Bentonite

SEDIMENT CONTROL

Inlet Protection

- Grated Inlet, Curb Inlet, Area Inlet Protection

Ditch Checks

- Triangle Silt Dike
- GeoRidge

Perimeter Protection

- High and Low-Porosity Silt Fence, Straw Wattles, Silt Socks
- Safety Fence

Flocculants & Water Treatment

- Polymer-Based & Natural Flocculants

Sediment Basin Skimmers

Dewatering Bags

Trackout Control

- FODS
- Rumble Grates

Turbidity Curtains

EROSION CONTROL

Basic Hydraulically Applied Mulches

- Wood
- Paper
- Blends
- Straw

High-Performance Hydraulically Applied Products

- BFM
- FGM
- Additives & Tackifiers

Temporary Erosion Control Blankets

- Coir & Jute Mat/Nettings
- Short-Term ECBs
- Extended-Term ECBs

Permanent Erosion Control Blankets

- Turf Reinforcement Mats
- HP-TRMs
- Anchor Reinforced Vegetation System

Structural BMPs

- Transition Mats
- Geoweb Cellular Confinement
- Composite Vegetated Armor System
- Flex MSE Vegetated Wall System
- Articulated Concrete Block
- Gabions
- Grout-Filled Geotextile Mats

Vegetation Establishment

- Native Seed & Turf Seed
- Fertilizers
- Organic Soil Additives
- Stratavault Soil Cells

STORMWATER MANAGEMENT

Water Quality

- Inlet Filter Boxes
- Pre-Treatment Chamber
- Nutrient Separating Baffle Boxes
- High-Flow Biofiltration Media
- Hydrodynamic Separators
- Stratavault

Water Quantity

- Modular Underground Storage Systems
- Chamber Detention Systems

Drainage

- HDPE Swale Liner
- Pipe & Fittings
- Drainage Composites
- Strip Drain

Inlet Structures

- PVC
- Drain Basis, In-Line Drains
- Landscape

Permeable Pavers

- Permeable Articulating Concrete Block
- Grass Pavers
- Gravel Pavers
- Concrete Pavers

SPECIALTY

Natural & Synthetic Coir Fiber Logs

Vegetated Reinforced Soil Slopes

Soil Anchors

Root Barrier System

AquaBlok

Muscle Wall

We are full line distributors of construction materials for all project types. Contact us for assistance with a project. From specification and development to installation and completion, we're here to help with all of your site solution needs.

**GEOSYNTHETICS | EROSION CONTROL | STORMWATER MANAGEMENT
SEDIMENT CONTROL | REVEGETATION & SOIL AMENDMENTS**